

A quarter-of-a-mile of the Williamsburg waterfront, between Grand Street and South 5th Street, Domino Park presented the opportunity for an ambitious mixed-use development, providing a unique and unprecedented opportunity to reconnect Williamsburg to its waterfront and create a significant and continuous open space that is deeply rooted in the community and in the history of this particular place.

Credit: James Corner Field Operations



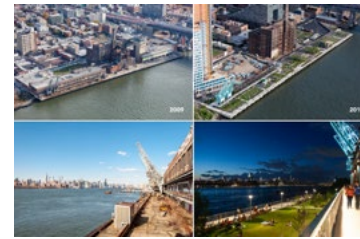
As the first phase of the 11-acre site's transformation into an ambitious mixed-use development project, Domino Park represents a commitment to deliver 5 acres of public space to the surrounding community.

Credit: James Corner Field Operations



Domino Park offers a range of activities such as beach volleyball, a playground, a dog run, a taco stand, water features, lawns, and plentiful seating. Last summer, the park had over 100 free public events, attended by nearly 7,000 New Yorkers.

Credit: Alex S. MacLean / Landslides



Sited within a Community Board with one of the lowest ratios of open space to people, Domino Park reconnects Williamsburg to the East River for the first time in 160 years and provides much-needed open space for local residents.

Credit: Top row: Alex S. MacLean / Landslides, Bottom row, left: Courtesy of Two Trees Management, Bottom row, right: Barrett Doherty



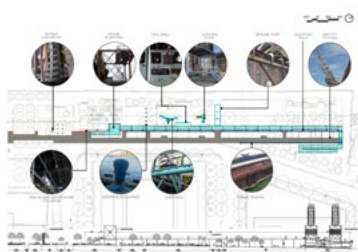
Domino Park's design capitalizes on the expanse of the East River and the sweeping views of the Manhattan skyline.

Credit: Daniel Levin



Native planting beds in front of the Pier Reveal water feature and the Fog Bridge, with salvaged syrup tanks beyond.

Credit: Barrett Doherty



Inspired by the legacy of the working waterfront, one of the primary features in the park is an "Artifact Walk," which integrates over 30 large-scale salvaged relics into an interpretive walk and engaging journey.

Credit: James Corner Field Operations



The Elevated Walk's southern entrance houses a taco stand and leads to an ADA-accessible elevated catwalk, which is supported by 21 columns from the Raw Sugar Warehouse that were salvaged in situ.

Credit: Barrett Doherty



The central water feature draws families from all backgrounds and offers views of the Williamsburg Bridge and East River.

Credit: Barrett Doherty



The park has become an important anchor for the neighborhood and a place for the community to come together, with more than two million visitors since its opening in June 2018 and 15,000 visitors a day during peak weekends.

Credit: Barrett Doherty



The park's materials are inspired by the tough, industrial character of the Williamsburg waterfront including weathered steel, galvanized and stainless steel, concrete, and reclaimed wood from the Raw Sugar Warehouse.

Credit: Barrett Doherty



Domino Park's sizable lawn nestles under the Elevated Walk and is a popular spot on warm evenings.

Credit: URBIS Limited



The park's specific mix of programming is a direct result of engagement with the surrounding communities, with popular support for the park to be family-oriented, celebrate history, and include a beach volleyball court in particular.

Credit: Barrett Doherty



The central water feature and seating steps offer a popular gathering place at the heart of the park.

Credit: Barrett Doherty



The Fog Bridge gives visitors a unique way to experience the East River and highlights the park's structure below.

Credit: Daniel Levin



The Lawn—with views south to the landmark Refinery building and the Williamsburg Bridge—is a popular spot for sunbathing, people watching, picnicking, and leisure recreation.

Credit: Barrett Doherty